



# MAAS

GROUP HOLDINGS

CAPABILITY STATEMENT  
2020

## A GROWING, DIVERSIFIED INDUSTRIAL GROUP

Founded in 2002, Maas Group is a leading independent Australian construction materials, equipment and services provider with diversified exposures across the civil, infrastructure, mining and property markets.

With a Dubbo, NSW, based head office Maas Group operates right across Australia, with a strong presence in regional areas and a growing international presence.

Maas Group holds strong market positions in each of its complementary segments, offering a full scope of services to complete any job:

### CONSTRUCTION MATERIALS

Comprising 18 strategically located quarries and one of the largest mobile crushing and screening operation in NSW.

### CIVIL, CONSTRUCTION & HIRE

Providing construction and above ground plant hire services to major civil and infrastructure projects in Australia, electrical infrastructure works to projects in NSW and electrical equipment and works to tunnelling and mining sector projects in Australia.

### REAL ESTATE

Developing residential housing estates across NSW with a pipeline of future commercial and industrial projects.

### UNDERGROUND SERVICES AND EQUIPMENT

Specialising in the supply of mobile equipment to underground tunnelling and mining sector projects in Australia, as well as large scale equipment engineering and manufacturing to underground tunnelling and mining projects globally.

**REGIONAL**  
▶GROUP

**MAAS**  
▶CIVIL

**MAAS**  
▶PLANT HIRE

**MAAS**  
▶PROPERTIES

**EMS**  
GROUP ▶

**JLE**  
▶GROUP

With a fleet in excess of 300 items and a diverse and experienced team of over 600 staff, the highest standards of delivery are met on time, every time.

13



OPERATING  
LOCATIONS

12



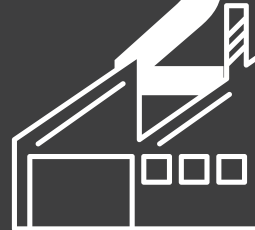
OFFICES

20



QUARRIES

2



MANUFACTURING  
FACILITIES

600+



STAFF

From residential developments to roundabouts and road, dams and drains, rail lines and airports, energy and renewables, infrastructure construction and mining, Maas Civil has an impressive record of getting the job done on time and on budget.

Having worked on projects of all shapes and sizes, Maas Civils resume speaks for itself with highlighted work including Fletcher International Cotton Sheds, Bloomfield Medical Complex, Tomingley Goldmines, Parkes Logistic Terminal, Southlakes Estate, South Dubbo Weir and various regional council projects.

**We work in:**

- ▶ Residential, Commercial and Industrial Developments
- ▶ Road Works
- ▶ Dams and Drainage
- ▶ Infrastructure Construction
- ▶ Mining

**Featured Projects:**

- ▶ Fletcher International Rail Terminal
- ▶ Southlakes Estate
- ▶ Bloomfield Medical Complex
- ▶ Northparks Mine
- ▶ Lake Cowal Access Road
- ▶ Parkes Logistics Terminal
- ▶ Dubbo Regional Airport

**18**  
year track record**100%**  
on time delivery

Southlakes Estate



Parkes Logistic Terminal



Subdivisions



South Dubbo Weir



Scrapers



Westconnex



Caval Ridge



Burrendong Dam



Northpakes



## MAAS PLANT HIRE

SUPPLIES QUALITY PLANT AND EQUIPMENT TO MANY OF THE MAJOR INFRASTRUCTURE PROJECTS THROUGHOUT AUSTRALIA.

With a well-maintained, top-quality fleet of in excess of 240 items, our plant also has the added option of Trimble GPS. Predominately featuring CAT machines to ensure reliability and access to repair, we have proudly supplied equipment to most of the majors in Australia including Seymour Whyte, Lend Lease, CPB Contractors, McMahon, BMD, Golding Contractors, John Holland and Fulton Hogan.

With a reputation for being able to deliver the right product and advice to enable any equipment requirement is met, our experienced team is at the forefront of the industry.

### Our fleet includes:

- ▶ Artic & Rigid Dump Trucks
- ▶ Excavators
- ▶ Bulldozers
- ▶ Graders
- ▶ Compactors
- ▶ Loaders
- ▶ Artic & Rigid Water Carts

### Featured projects:

- ▶ Westconnex
- ▶ Sydney Metro
- ▶ Pacific National Rail Intermodel
- ▶ Eton Range Realignment
- ▶ Asia Pacific LNG Gas Gathering
- ▶ Chaffey Dam Upgrade
- ▶ Tomingley Goldmine
- ▶ Hunter Expressway



With a proven track record and dedication to sustainability

240+

fleet of equipment

100%

on time delivery

## REGIONAL QUARRIES AUSTRALIA IS THE PREFERRED SUPPLIER OF PRODUCT TO NSW GOVERNMENT DEPARTMENTS AND AGENCIES.

Teaming alongside various companies and government departments, we continue to deliver a high standard of product to civil and infrastructure construction projects across the state. With a fleet of 38 company owned PBS rated Truck & Dogs, our team can guarantee large volumes delivered to site as required. With long-life quarries strategically located in regional NSW growth markets, our product is easily accessible and reliable to a wide market.

With a reputation for being able to deliver the right product and advice to enable any specification requirement is met, our experienced team is at the forefront of the industry, and our products include aggregates, crushed rock and road base, fill material, sand and specialty rock.

### Our products:

- ▶ Manufactured Sand
- ▶ Aggregates 5mm – 20mm
- ▶ Concrete Mix
- ▶ Roadbase: DGS 20, DGB 20, DGB20/HD, DGB 40
- ▶ Select 100mm
- ▶ Drainage Rock
- ▶ Rail Ballast
- ▶ Non Spec Road Base – 20mm & 40mm
- ▶ Select Fill
- ▶ Ridge Gravel
- ▶ Gabion Rock – 120mm+
- ▶ High PI Road Base – 20mm

### We supply to:

- ▶ Roads and Maritime Services
- ▶ Councils
- ▶ ARTC
- ▶ Contractors
- ▶ Builders

# 20



strategically placed quarries

# 38



company owned PBS rated truck and dogs



West Wyalong Quarry



Forbes Quarry



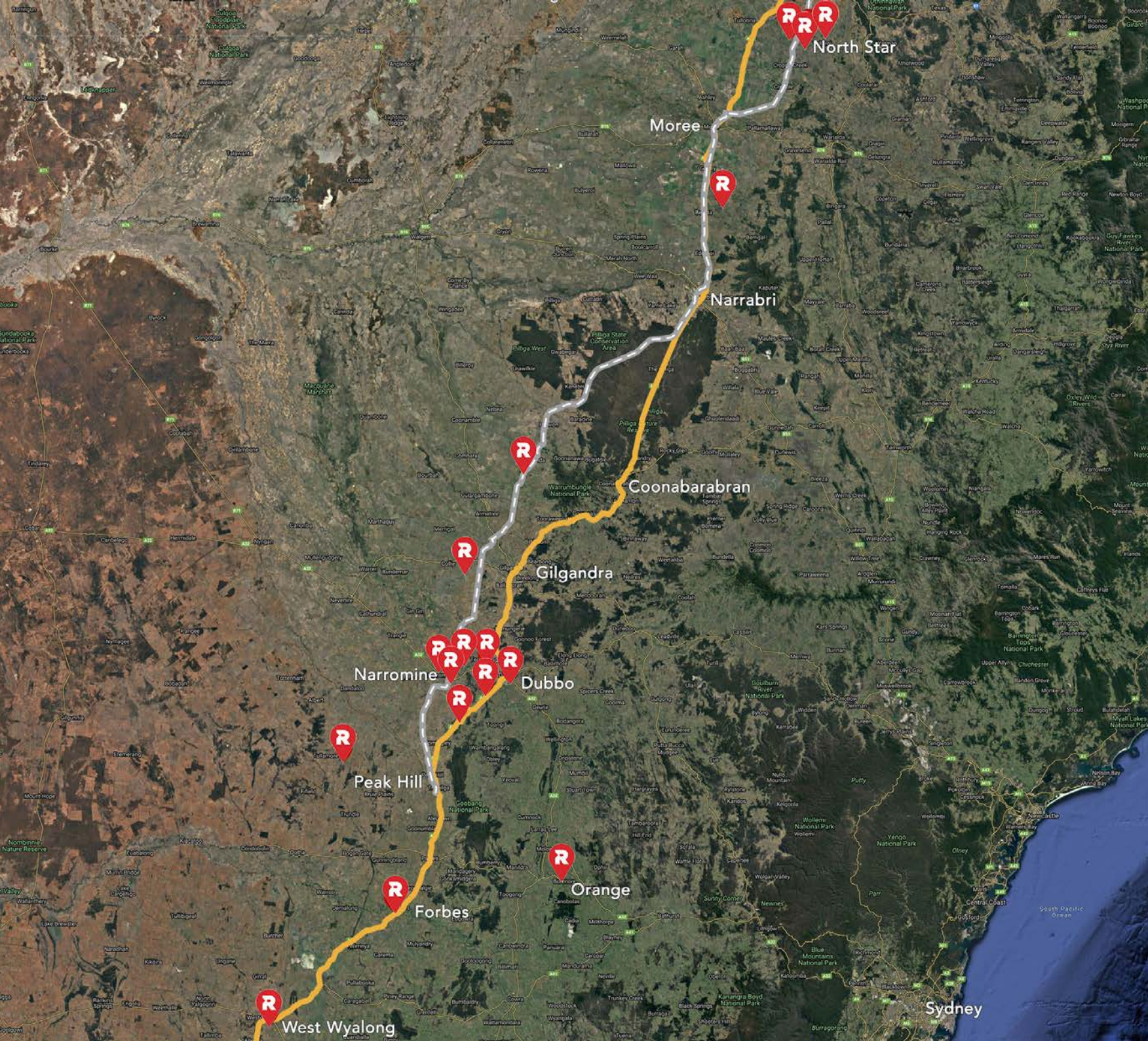
Dubbo Quarry



Dubbo Quarry



Dubbo Quarry



# OUR QUARRIES

- ▶ NORTHSTAR QUARRY
- ▶ TIKITERE QUARRY
- ▶ PEARLMAN QUARRY
- ▶ BELLATTA QUARRY
- ▶ TABLE TOP MOUNTAIN QUARRY
- ▶ MOUNT TENANDRA QUARRY
- ▶ BERAKEE QUARRY, GILGANDRA
- ▶ DUBBO SANDS
- ▶ MACQUARIE MANOR QUARRY, NARROMINE
- ▶ EUMUNGERIE ROAD QUARRY, NARROMINE
- ▶ DAPPO ROAD QUARRY, NARROMINE
- ▶ SOUTH KESWICK
- ▶ MEWBURNS QUARRY
- ▶ COOKS PIT
- ▶ TULLAMORE QUARRY
- ▶ BALD HILL QUARRY, ORANGE
- ▶ FORBES QUARRY
- ▶ WEST WYALONG QUARRY

## MAP KEY

- RGA QUARRY
- RAILWAY
- NEWELL HIGHWAY







Screen Crusher



Pug Mill



Mewburn's Pit



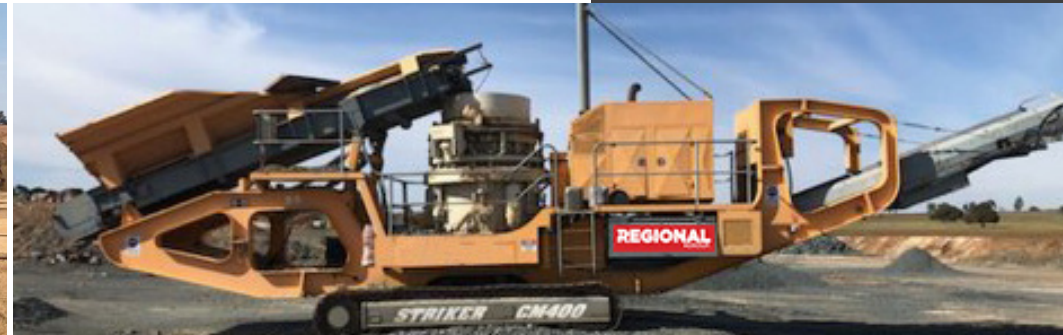
Stacker



Screen Crusher



Mobile Plant



Cone Crusher

## REGIONAL CRUSHING AND SCREENING

IS A MAJOR FORCE IN THE MOBILE CRUSHING AND SCREENING MARKET, WORKING FOR A NUMBER OF COUNCIL SHIRES, MINES AND MAJOR CONTRACTORS.

One of the largest operations in NSW, we boast a diverse fleet and highly skilled workforce, offering high quality quarry products to our customers efficiently, to meet short lead times.

With a proven track record and reputation to produce and deliver the right product, whether it be from our fixed plant or extensive range of mobile crushing equipment, our fleet and workforce have the capability to work in hard rock quarries, coal mines and civil projects.

### Our products:

- ▶ Fixed Crushing, Screening and Washing Plant
- ▶ Closed Circuit Electric Mobile Crushing Unit
- ▶ Closed Circuit Fixed Electric Plant
- ▶ Jaw, Cone, Impactor and Stacker Crushers
- ▶ Precision Pugmill
- ▶ Screening Plant

### Our extensive range of mobile fleet:

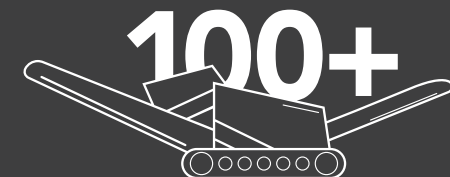
- ▶ Jaw Crushers
  - ▶ Closed Circuit Electric Mobile Crushing Unit
  - ▶ Closed Circuit Cone Crushers
  - ▶ Cone Crushers
  - ▶ Closed Circuit Impactors
  - ▶ Impactors
  - ▶ Screens
  - ▶ Tracked Stackers
- ▶ Full Fleet of Complimentary Mobile Plant

1,000,000's



of tons of products supplied

100+



items of mobile crushing equipment



# JLE GROUP

IS A DYNAMIC ELECTRICAL COMPANY WITH A BROAD REACH  
ACROSS THE ELECTRICAL INDUSTRY.

JLE Group is a regionally based electrical engineering and contracting company. Our Company specialises in engineering, design and construction of electrical infrastructure, including construction and maintenance of fixed plant process equipment and private high voltage and low voltage networks. Our Business has been built around great people with a great culture and a single vision to be the best regional engineering contracting service provider.

## Our Capacity

The capacity of our company is underpinned by our electrical engineering teams; experienced in both network contestable design as a level 3 authorised service provider, and process and control engineering in the industrial hard rock and fixed plant industries. JLE's ability to understand the engineering behind the project ensures that our electrical construction and delivery teams achieve key milestones, with complete understanding of our clients needs. We ensure that our projects are delivered safely and efficiently every time.

## Our Team

Our company consists of highly skilled and equipped full-time electricians, linesman and HV cable jointers, switchboard manufacturers and subcontractors. JLE employ up to 100 staff consisting of full time, casual and subcontract positions. JLE have a commitment to finding the right staff to create the best culture.

## Our Difference

JLE can turn-key all aspects of your project, providing:

- ▶ Level 3 Design Services
- ▶ Level 1 Infrastructure Works
- ▶ Level 2 Works
- ▶ The expanse of expertise across our workforce assures that you can start and finish your project with JLE Electrical.



highly skilled and  
equipped staff



total projects completed



Dubbo Sewage Treatment Plant



Uranquinty Zone Substation

**SAFETY FIRST, ALWAYS.**



## ENGINEERING + DESIGN

**JLE ENGINEERING + DESIGN IS EQUIPPED WITH A SKILLED WORKFORCE WHO ARE DEDICATED TO DELIVER ENGINEERING SOLUTIONS FOR OUR CLIENTS.**

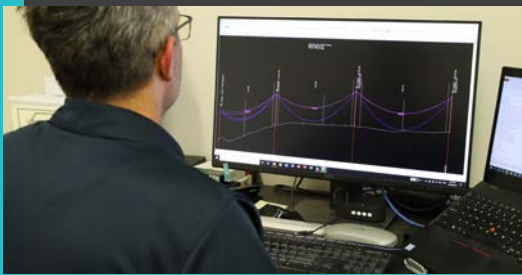
JLE Engineering + Design boasts extensive experience in the private and public sector for electrical design, installation and commissioning projects as well as maintenance works from instrumentation through to high voltage networks.

We have a high level of understanding of process control equipment with the ability to develop process control systems.

Our methodical approach to problem solving and developing outcomes ensures that we provide our clients with long term benefits.

### Our range of level 3 design services include:

- ▶ Urban and rural residential, commercial and industrial subdivisions.
- ▶ Removal and/or relocation of overhead and underground electrical assets and infrastructure.
- ▶ Connection of load for individual and mixed use residential, retail, commercial and industrial sites.
- ▶ Public lighting networks, including new works and modifications to existing sites.
- ▶ Private high voltage customer connections.
- ▶ JLE Engineering + Design also prepares design packages that are both financially feasible and technically compliant.
- ▶ JLE undertakes in-house protection and earthing studies based on our customers' specific site requirements.
- ▶ Our level 3 designers will work closely with our in-house high voltage maintenance and level 1 construction teams, offering our customers the complete solution.



## ELECTRICAL CONSTRUCTION

**JLE ELECTRICAL CONSTRUCTION, IS A LEVEL 1 AUTHORISED SERVICE PROVIDER, WHO DELIVERS A HIGH-QUALITY TURN-KEY SOLUTION FOR ALL COMMERCIAL AND INDUSTRIAL CLIENTS.**

JLE Electrical Construction, is a Level 1 authorised service provider, who delivers a high-quality turn-key solution for all commercial and industrial clients. We liaise with all authorities and provide our customers with a certified Level 3 Design for all overhead and/or underground power line works. JLE Utility Services will also supply and install the dedicated transformer and/or power supply as required.

### Level 1 overhead and underground services available:

- ▶ Overhead powerline construction Level 3 certified design.
- ▶ Supply and installation of pole mounted substations.
- ▶ Overhead transmission line construction.
- ▶ Underground high & low voltage reticulation.
- ▶ Supply and install of pad mounted substations.
- ▶ High & low voltage jointing.
- ▶ Underground and overhead high & low voltage mining applications.

### Level 2 overhead and underground services available:

- ▶ Supplying and installing consumer mains.
- ▶ Mains switchboards.
- ▶ All metering facilities as required, including supply and installation of final sub circuits and dedicated protection devices.
- ▶ Review and implement high voltage operating protocol, including HV asset and maintenance procedures.
- ▶ Supply HV maintenance services for all high voltage customers.



## UTILITY SERVICES

**JLE UTILITY SERVICES ENSURES ITS SUCCESS IN DELIVERING COMPLEX PROJECTS EFFICIENTLY, EVERY TIME.**

We apply our philosophy which is to always establish and build an open collaborative partnership with our clients. We ensure constant communication exists throughout the design and construction process. **JLE specialises in medium to large electrical installations in the following industries:**

- ▶ Mining, hard rock quarrying and process plant and equipment.
- ▶ Infrastructure; both HV and LV network and customer owned assets providing design, installation and ongoing maintenance services.
- ▶ Water; providing turn-key engineering and installation works associated with large and medium sized water and sewer pumping stations.
- ▶ Hazardous area design and installation solutions; including grain handling and rail load out and petrochemical installations and maintenance.
- ▶ Rail infrastructure; installation of distance signing infrastructure including power supplies for rail crossings.



## MINING + TUNNELLING

**JLE MINING + TUNNELLING OFFER A COMPLETE RANGE OF SPECIALISED SOLUTIONS FOR YOUR TUNNELLING AND MINING NEEDS.**

JLE Group's dedicated electrical mining and tunnelling division specialises in electrical services and supplies for underground mining and tunneling projects across Australia. Our highly skilled and efficient team offer expertise and electrical solutions that reduce costs, minimise downtime, and increase productivity.

### Our range of specialised solutions:

- ▶ HV temporary power
- ▶ Hire substations and cabling
- ▶ Lighting boxes
- ▶ Network connections
- ▶ Installations and HV termination starters
- ▶ We manufacture a range of 1,000V start boards, distribution boards and gate end boxes for hard rock mining and tunnelling industries.
- ▶ We manufacture and design a wide variety of AS2081 compliant electrical switchboards and substations, 1000V and 415V starter boards and distribution boards. We also provide full support including spare parts, installation and service.
- ▶ Electrical products for sale or hire including drafting, detailed design and engineering, protection studies, electrical engineering and design, management plans, auditing and compliance all compliant with the highest regulatory requirements.
- ▶ Multi-skilled and highly qualified electricians for fixed, short or long-term hire, site supervisors and complete crews operating in every state.
- ▶ Supply of all types of trailing/rubber cable. From 35 – 150mm 241.1 1000V cable to 11kV TBM cabling.
- ▶ Multi-skilled team of Project Managers, Project Supervisors and Project Electricians experienced in the delivery of complete electrical and instrumentation projects, from design and installation through to commissioning and handover.
- ▶ Extensive high voltage services
- ▶ Dedicated testing and commissioning
- ▶ Probeck-IPS



Probeck-IPS



# EMS GROUP

OUR SERVICES; COMPREHENSIVE, INTEGRATED, SCALABLE

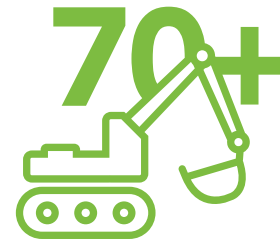
## WORKSHOPS

The Workshops at EMS Group provide professional service and repairs to get you back to work, fast. Known for delivering a consistently high standard of work, our tradespeople; mechanics, boilermakers and auto electricians have a wealth of experience across all kinds of machinery, specialising in a range of services.

Our Workshop teams also understand the demands of the industries we operate in. We're used to working under the pressure of tight deadlines and make every effort to turn repairs around quickly. When something is urgent, no one will get you back on track faster than we can.

### Capabilities includes:

- ▶ Field service capabilities and mobile repairs
- ▶ Full machine rebuilds
- ▶ Fabrication
- ▶ Auto electrical repairs
- ▶ Component and cylinder overhauls
- ▶ Hydraulic specialists
- ▶ Line boring and I.D welding
- ▶ Servicing and advice.



Number of specialised underground mining, tunnelling and construction machines in the EMS Hire fleet.

## HIRE

EMS Group offers a wide range of machinery and flexible hire solutions to suit your needs. Our new and reconditioned machines are backed by our own full-service workshop to ensure your peace of mind when hiring from us.

### What we offer;

- ▶ Dedicated underground mining and tunnelling equipment and machinery including; haul trucks, loaders, development drills, production drills, underground agitator trucks, shotcrete machinery and tool carriers.
- ▶ Wet and dry plant hire options
- ▶ Flexible hire terms and rates
- ▶ Dedicated support from the EMS workshop and field service mechanics
- ▶ Selected critical components can be delivered directly to site to minimise delays.



CAT R2900G JLK Loader

## PARTS

EMS Group have a vast inventory of parts and service exchange items to keep your fleet up and running and we can minimise your downtime by getting these to you quickly. Our sales division has a large variety of mining and tunnelling machinery for sale. We are always on the lookout for machinery and equipment that we know our customers need.

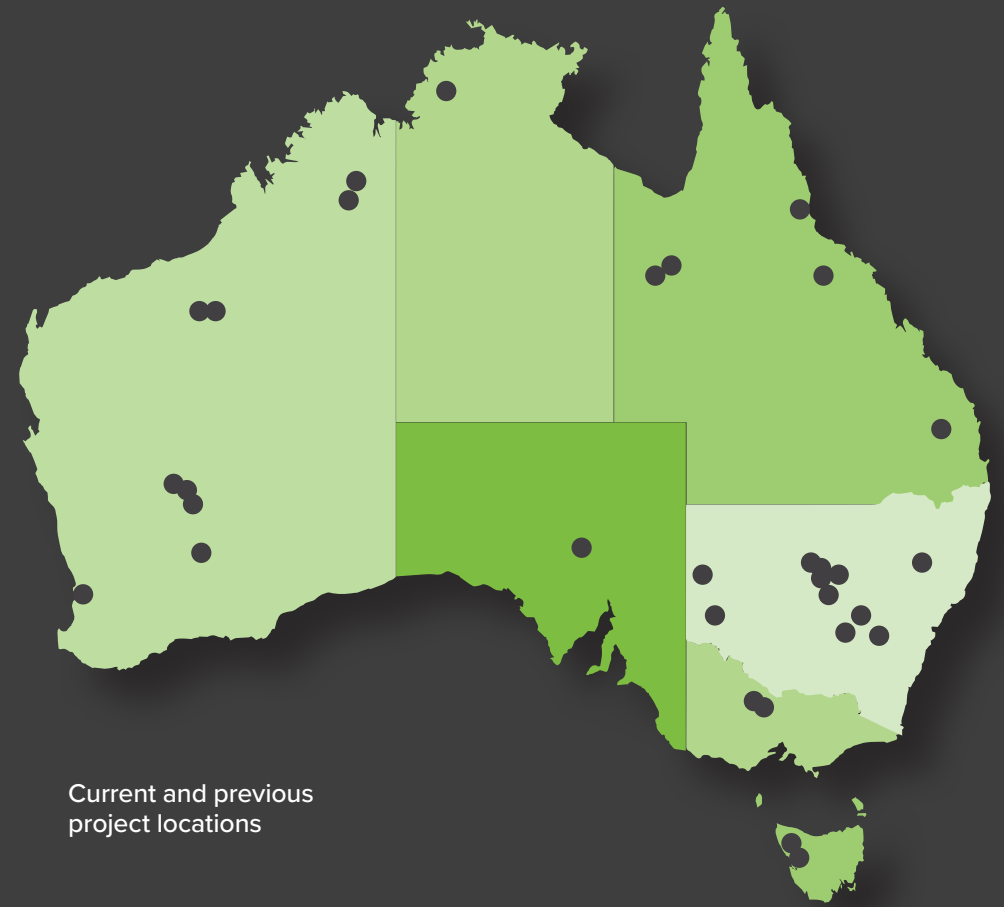
### What we offer;

- ▶ A variety of new and used parts to suit all needs
- ▶ All major brands and models, including Caterpillar, Atlas Copco, Sandvik, JACON and more
- ▶ Service exchange options
- ▶ Fast, economic delivery service

## SALES

### What we offer;

- ▶ Mining, tunnelling, and construction machinery available for sale
- ▶ Hire options
- ▶ Quality assurance backed by the EMS Workshop
- ▶ Full after-sales support service



## OUR COMPANIES

EMS Group has proudly expanded in 2019 to include VMS, Comet Equipment and JACON Equipment:

# VMS

Our international engineering and manufacturing subsidiary in Vietnam. VMS allows us to provide our global customers base with high quality and price competitive equipment and machinery, engineer and manufactured to meet the needs of the industries we service.

# COMET EQUIPMENT

Comet Equipment is a mobile equipment manufacturer of underground concrete machinery for the mining, tunnelling and construction industries.

# JACON EQUIPMENT

JACON was founded in 1978 and has grown throughout this time to become recognised within the construction and mining industry as a designer, manufacturer, and supplier of purpose-built concrete pumping, spraying, and transportation equipment. In 2019, JACON was acquired by EMS Group, enhancing its footprint and support services and allowing EMS Group and JACON Equipment to provide a world class product, with world class service.

Through the groups innovative approach, cutting edge technology, focus on safety and cost effectiveness, we remain dedicated to total customer satisfaction in providing operator friendly equipment and services whilst ensuring effective, productive operations.

Internationally, the company's markets are widespread to vast regions around the world including Australia, North and South America, Africa, Asia, Europe and the Russian Federation.

**JACON HAS SOLD OVER 1500  
UNITS OF CIVIL EQUIPMENT  
AND OVER 500 UNITS FOR  
MINING AND TUNNELLING  
OPERATIONS**

## SHOTCRETE EQUIPMENT



## CONCRETE & WATER TRANSPORTATION



## UTILITY VEHICLES



## EXPLOSIVES CHARGING EQUIPMENT



## TRAILER MOUNTED CONCRETE PUMPS



## TRUCK MOUNTED CONCRETE PUMPS



# OUR TEAM



**WES MAAS**  
CEO  
MAAS GROUP HOLDINGS

Wes was 22 when he launched the business which started out with one Bobcat and a tipper truck. A little over 15 years later, he has grown the business to incorporate a highly successful plant hire operation of 300+ equipment, bulk earthworks, civil construction, quarry business and also a crushing and screening contract hire, along with a residential and commercial property division. Wes is now supported by a team of dedicated staff with the same vision and a very strong culture, all who endeavour to continue to grow the business.



**CRAIG BELLAMY**  
CFO  
MAAS GROUP HOLDINGS

Craig joined Maas Group in May 2019 as Chief Financial Officer and is responsible for all financial aspects of the Group including accounting, treasury, budgeting and tax. Craig has over 25 years' experience and has previously held executive roles including Chief Executive Officer and Chief Financial Officer for ASX Listed Entities Devine Limited and Unity Pacific Group Limited (formerly Trinity Group Limited). Craig holds a Bachelor of Business (Accountancy) and is a Chartered Accountant.



**DAMIEN PORTER**  
GENERAL MANAGER  
MAAS PLANT HIRE

With 20 years of experience in hire, operations and sales, Damien brings a comprehensive knowledge of the equipment and machinery industry. Damien spent a number of years working for a major equipment hire company. Damien has been with Maas since 2005 and oversees upwards of 100 employees and items of machinery at any given time.



**DOMINIC WILSON**  
GERENAL MANAGER  
MAAS CIVIL

Dominic started with Maas in 2003 (the first employee in fact) after gaining his qualifications as a plumber. Working in all areas of civil works, including copper and gold mine operations, residential subdivision and more currently rail construction, Dominic possesses a vast knowledge and experience. Dominic currently leads the civil team of some 50+ employees in projects around NSW.



**ANDY LETFALLAH**  
INTEGRATION AND BUSINESS  
DEVELOPMENT MANAGER

Andy joined Maas Group in 2019 with the objective of delivering profitable growth and operational excellence specifically focused on the Commercial Property portfolio and Maas Group integration. Andy has over 20 years in leadership roles across sales, operations and finance, with an esteemed career carved out across various divisions of Brambles Ltd (ASX: BXB) and Iron Mountain (NYSE: IRM) integrating Recall (ASX: REC). Andy is a Six Sigma Black Belt, and holds a Bachelor of Commerce Degree with majors in Marketing, Management and Human Resources and a Masters of Business Administration (MBAx) with a major in Technology.



**MURRAY WARD**  
FINANCIAL OFFICER  
MAAS GROUP HOLDINGS

With a strong background in the derivatives market, Murray returned from Sydney to the Central West in 1998. His comprehensive knowledge of the financial sector ensured his success as the Business Manager for two major banking corporations. It was at this time he founded a friendship with Wes and the other key members of the Maas team, and came on board in 2012 as the Financial Officer. Murray's experience in lending and finance compliments the business strategy of Maas.



**RICHARD TOMKINS**  
GENERAL MANAGER  
REGIONAL GROUP

Richard joined Maas Group in August 2019 and brings with him a comprehensive knowledge of the construction material industry gained through a diverse 20 year career. Having spent 15 years working for the largest construction materials multinational in Australia, Richard has held many senior management roles in both their concrete and quarry businesses. Richard specialises in the delivery of large construction material projects, whilst optimising operational performance.



**JASON FINLAY**  
GENERAL MANAGER  
EMS GROUP

Jason is the General Manager for EMS and brings over 30 years experience in heavy vehicle parts and service repairs to the company. Jason took on the role of General Manager at a regional truck parts and repair company in 2002. As General Manager, Jason was responsible for significant growth of the business group taking on the Mack and Volvo dealerships as well as opening branches in Sydney, Dubbo, and the North American purchasing arm. Jason has gained his Certificate IV in Frontline Management.



**PETE EDWARDS**  
WORKSHOP MANAGER  
EMS GROUP

Pete is a heavy diesel mechanic by trade, who comes from a highway trucking and mechanical trade teaching background. Pete joined EMS Group in 2011 and is highly respected and regarded among his team and clients. With 17 years' experience in the mechanical industry Pete leads the team in the EMS Workshop covering a broad spectrum of trade, from trucks, field service work, light vehicle and 4WD, through to earthmoving and construction equipment and major machine rebuilds.



**JOSH LARGE**  
MANAGING DIRECTOR  
JLE GROUP

Josh founded JLE in 2004. Since this time, he has grown the business considerably and is driven to continue the growth of engineering, underground and overhead powerline construction and industrial process control and manufacturing. Josh ensures that JLE Electrical always delivers on every commitment.



# WITH A PROVEN TRACK RECORD AND DEDICATION TO SUSTAINABILITY

Maas Group Holdings is **committed to the environment**, and safety is first and foremost on its agenda prior to commencing any project.





# MAAS

▶ GROUP HOLDINGS

## MAAS GROUP HEAD OFFICE

20L Sheraton Road, Dubbo NSW 2830  
PO Box 4921, Dubbo NSW 2830

PHONE: 02 5852 1800  
EMAIL: [info@maasgroup.com.au](mailto:info@maasgroup.com.au)

[WWW.MAASGROUP.COM.AU](http://WWW.MAASGROUP.COM.AU)